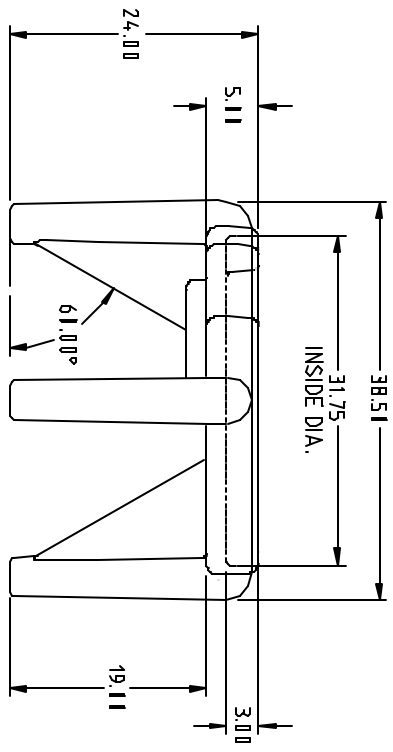
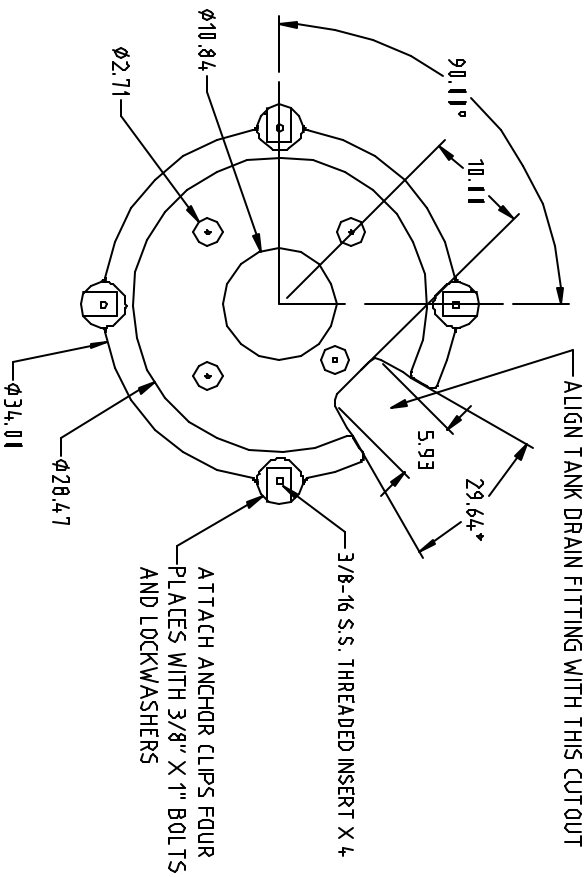
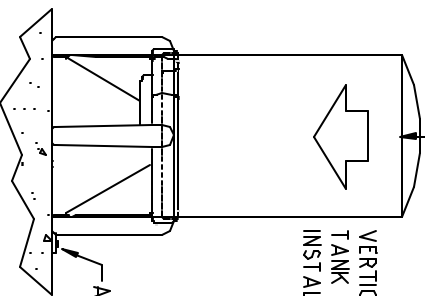


MAX. CAPACITY IS 1500 LB.

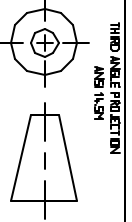
VERTICAL TANK INSTALLATION



REV	DESCRIPTION	DATE	APPRO

DRAWN / DATE	REV / DATE
APPRO. / DATE	REV / DATE

MATERIAL / SHOT WEIGHT	84d1 35
NOTES:	1. .188 NOMINAL WALL 2. STD. COLOR IS BLACK
CLIENT / DESCRIPTION	FLAT TOP POLY STAND



ALL DIMENSIONS ARE IN DECIMAL INCHES
 TOLERANCES UNLESS OTHERWISE SPECIFIED
 ± 5% @ 68° F



SCALE	N.S.	PART NO.	VT28/31-STP
-------	------	----------	-------------