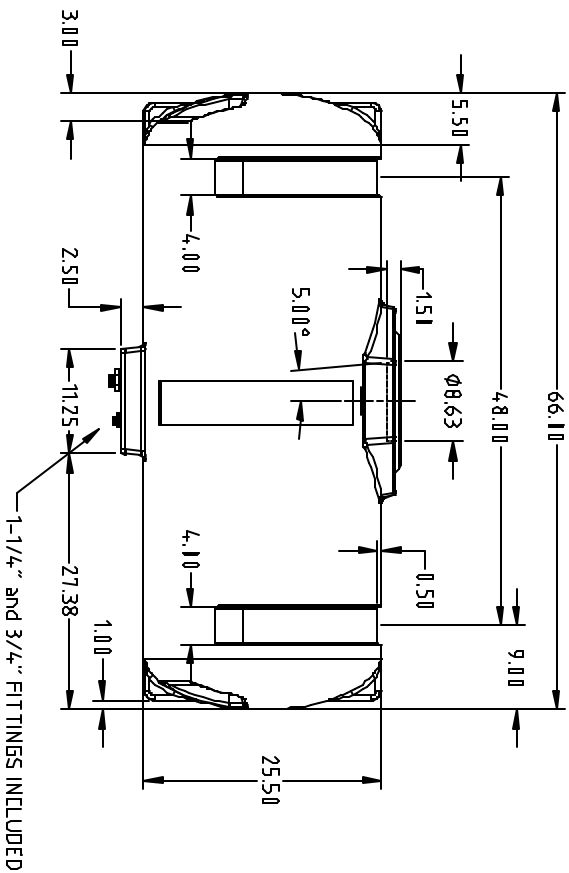
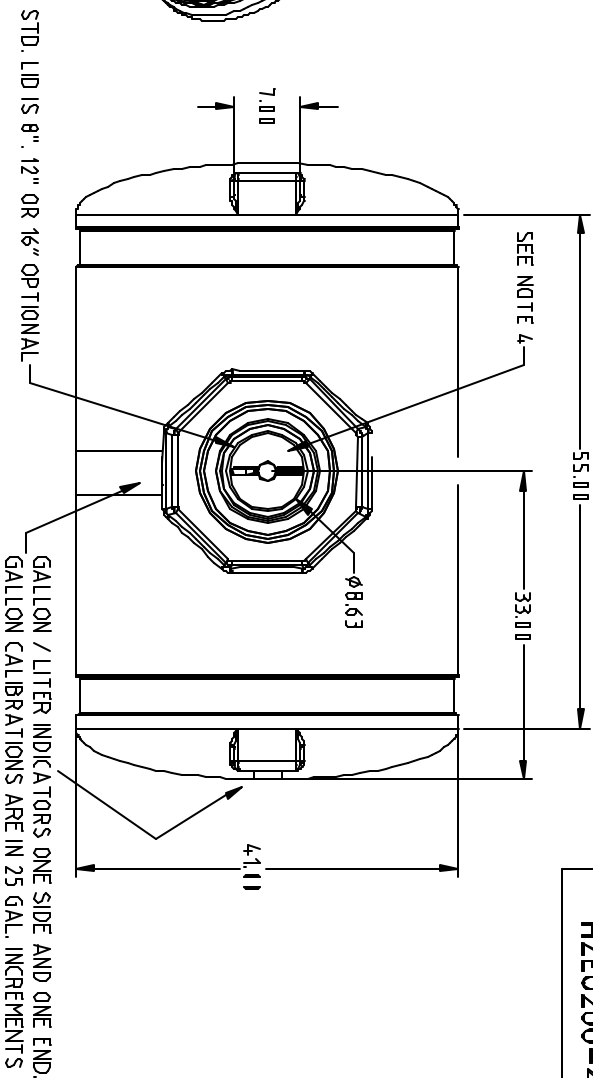
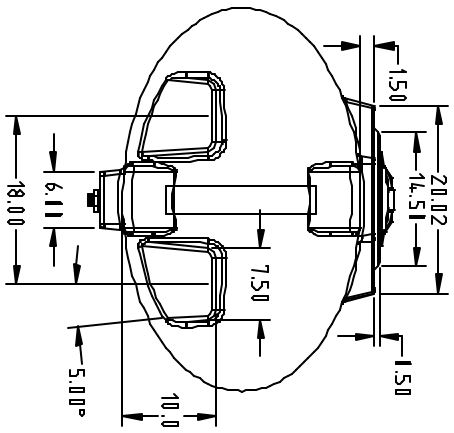
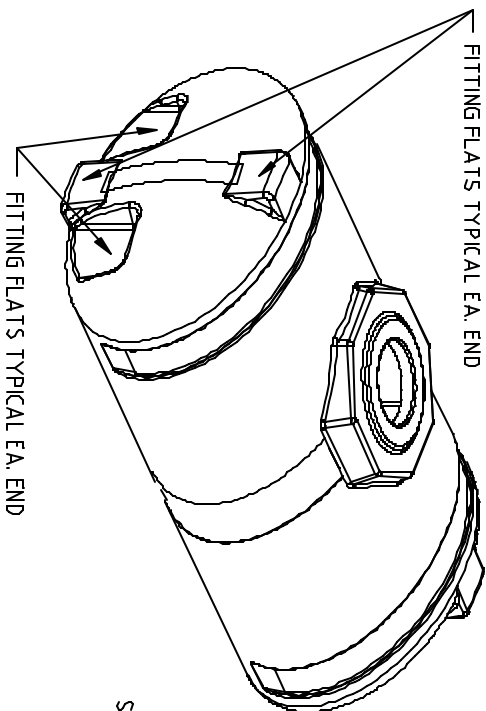


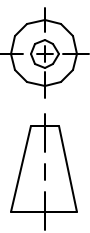
GENERAL NOTES:

1. USE .127 IN./IN. SHRINK ALLOWANCE
2. MOLD TO BE FULLY WELDED INSIDE AND STITCH WELDED OUTSIDE
3. CLAMPING TO BE WITH 1/2" X 1-1/2" GRADE 8 BOLTS, GRADE 5 NUTS AND NUT HOLDERS.
4. LID RING RECESS TO HAVE KNIFE EDGE ON INSERT TO MINIMIZE TRIMMING.



REV	DESCRIPTION	DATE	APPRD	DRAWN / DATE	REH/4/16/01	MATERIAL / SHOT WEIGHT	M111	M134	U625	P938
				APPRD. / DATE	REH/4/16/01	NOTES:		82		

THIRD ANGLE PROJECTION
ANSI 14.00



ALL DIMENSIONS ARE IN DECIMAL INCHES
TOLERANCES UNLESS OTHERWISE SPECIFIED

$\pm .5\% \text{ @ } 88^\circ \text{ F}$

CLIENT / DESCRIPTION
Ace Roto-Mold
A DIVISION OF DEN HARTOG INDUSTRIAL INC.

ACE 200 GALLON ELLIPTICAL TANK

SCALE N.S. PART NO. HZE0200-41

HZE0200-41