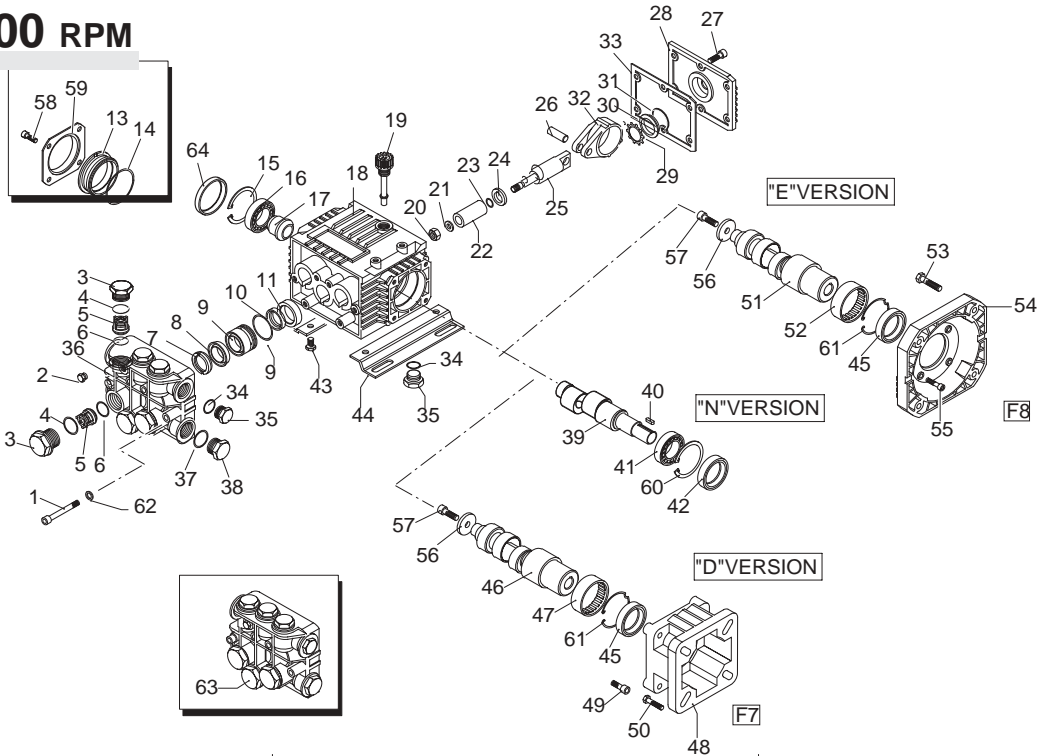


XTV 3400 RPM



Pos.	Code	Description	Qty.	Pos.	Code	Description	Qty.
1	1322730	Head bolt (137 in/lbs)	6	37	180101	O-Ring	1
2	620301	Plug	1	38	820361	Brass plug 1/2G	1
3	1260162	Valve Cap (300 in/lbs)	6	39	1322150	Crankshaft	1
3	1260162T	Valve Cap 1/4" threaded (300 in/lbs)	1	40	1321790	Crankshaft	1
4	1260163	Valve Cap 1/8" threaded (300 in/lbs)	1	41	1380520	Key	1
4	960160	O-Ring	6	42	1320370	Bearing	1
5	1269050	Complete valve	6	43	1260750	Oil seal	1
6	880830	O-Ring	6	44	1260470	Bolt	4
7	1260140	Support ring reducer Ø18to Ø15	3	44	1263890	Mounting rail	2
7	1260141	Brass Support ring	3	44b	1836	1/2" Rail Kit	1
7	1520120	Support ring 15mm	3	44c	1836H	1-5/8" Rail Kit	1
8	1260130	High pressure packing	3	45	480671	Oil seal	1
9	1260151	Piston guide	3	46	1321800	Hollow shaft Ø3/4"	1
10	1260420	O-Ring	3	46	1321810	Hollow shaft Ø3/4"	1
11	1260440	Low pressure seal	3	47	1321190	Bearing	1
12	1260460	Oil seal	3	48	1579	Gas engine flange	1
13	1320320	Bearing cap	1	49	1200430	Bolt	1
14	1320360	O-Ring	1	50	621710	Bolt	1
15	1260790	Circlip	1	51	1321820	Hollow shaft Ø5/8"	1
16	1320370	Bearing	1	51	1321830	Hollow shaft Ø5/8"	1
17	1320330	Bushing	1	52	1321190	Bearing	1
18	1320010	Pump housing	1	53	650610	Bolt	1
19	880130	Vented oil cap	1	54	1584	Electric motor flange	1
20	1260110	Nut (106 in/lbs)	3	55	1200430	Bolt	1
21	1260100	Washer	3	56	780230	Washer	1
22	1260120	Plunger	3	57	390430	Bolt	1
23	480480	O-Ring	3	58	1321780	Bolt	1
24	1260091	Washer (slinger)	3	59	1321420	Side cover	1
25	1260070	Plunger rod	3	60	1260790	Circlip	1
26	1260080	Plunger rod pin	3	61	1321080	Snap ring	1
27	1260760	Bolt (48 in/lbs)	6	62	1381550	Washer	6
28	1329010	Rear cover	1	63	1269261	Complete pump head Alum.	1
29	1260430	Snap ring	1	63	1269209	Complete pump head brass	1
30	1260250	Oil sight glass	1	64	1266740	Cap	1
31	1140450	O-Ring	1				
32	1260060	Con-rod (Alum.)	3				
32	1320140	Con-rod (Bronze)	3				
33	1260040	Gasket	1				
34	740290	O-Ring	2				
35	1980740	Brass plug 3/8G	2				
36	1262220	Pump head (Alum.)	1				
36	1320022	Pump head (Brass)	1				

Legend

Ø15	Ø15	Ø15	Ø15
For ○	For □	For ▼	For ◆
XTV2G15	XTV2G18 XTV2G20 XTV2G22	XTV3G10	XTV3G16 XTV3G18 XTV3G20 XTV3G22

Repair Kits

Water Seals	Valves	Pistons	Oil Seals
Kit 1866	Kit 1864	Kit 2628	Kit 1860 E&D Version Kit 1872 N Version
Pos. Qty.	Pos. Qty.	Pos. Qty.	Pos. Qty.
7 3	5 6	20 3	12 3
8 3	6 6	21 3	33 1
10 3		22 3	42 N Version 1
11 3		23 3	45 E&D Version 1
		24 3	64 1

Special Parts

Code	Description	Qty.
2815	Kit for up to 180° F Ø15 High Temp	1
2029	Viton water seals Ø15	1