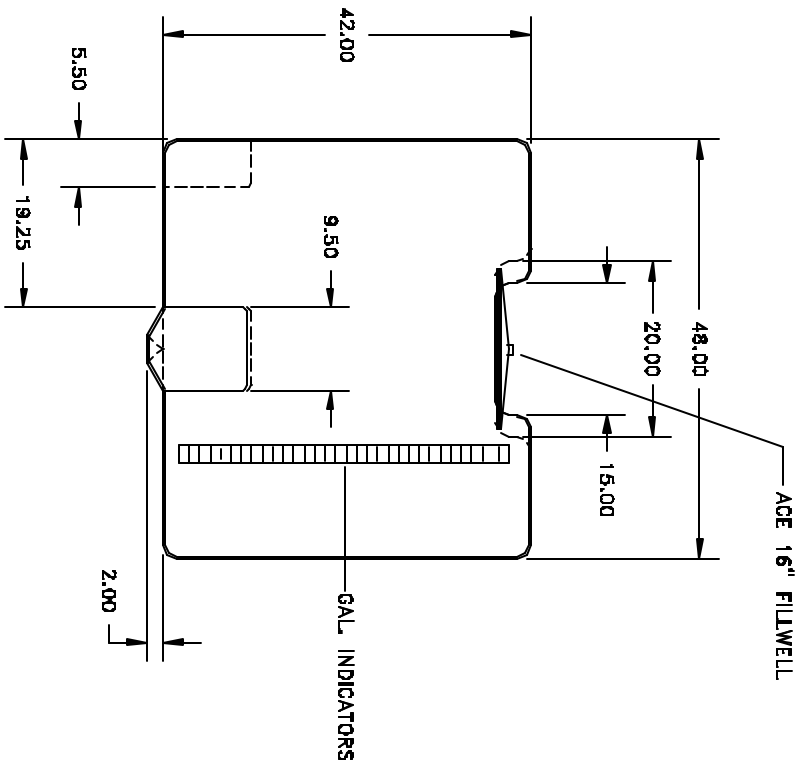
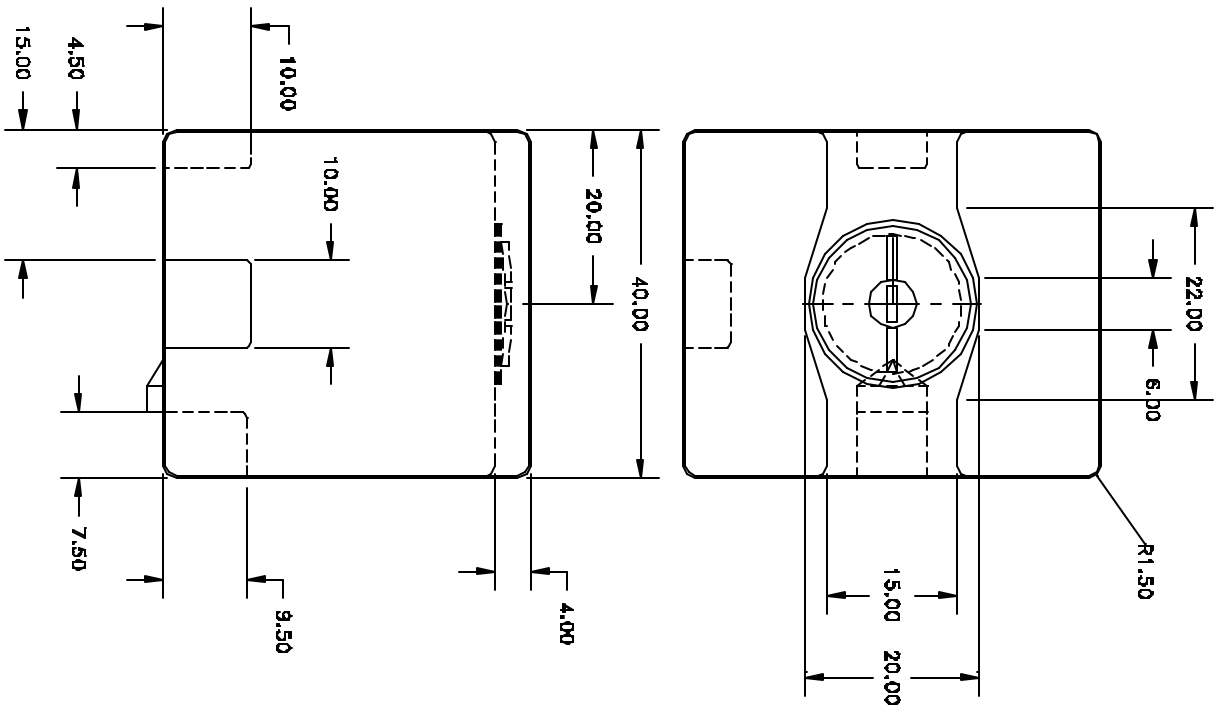


1. ROTATIONALLY MOLDED POLYETHYLENE CONSTRUCTION
2. 1.75 SPECIFIC GRAVITY
3. TRANSLUCENT
4. FDA APPROVED RESIN
5. CALIBRATED IN GALLONS
6. THREE YEAR WARRANTY
7. U.V. STABILIZED



REV	DESCRIPTION	DATE	APPRD	DRAWN / DATE	REH / DATE

MATERIAL / SHOT WEIGHT			
M111	M135	U625	P838
	120		

ACE PHOTO-MOLD
 A DIVISION OF DEN HARTOG INDUSTRIES, INC.
 4018 HWY. 60 BLVD., BOX 421, HOSPER, IOWA 51258-0421

CLIENT / DESCRIPTION
 300 GAL. PALLET PACK TANK

ALL DIMENSIONS ARE IN DECIMAL INCHES
 TOLERANCES UNLESS OTHERWISE SPECIFIED
 + .5% Ø 65° F

THIRD ANGLE PROJECTION
 ASH 145M

NOTES:
 1. 2.7% SHRINK ALLOWANCE
 2. COLOR - T.B.D.

SCALE
 N.S

PART NO.
 SP0300-PPTK