

47 Series SS

316 Stainless Steel Triplex Pump

FEATURES

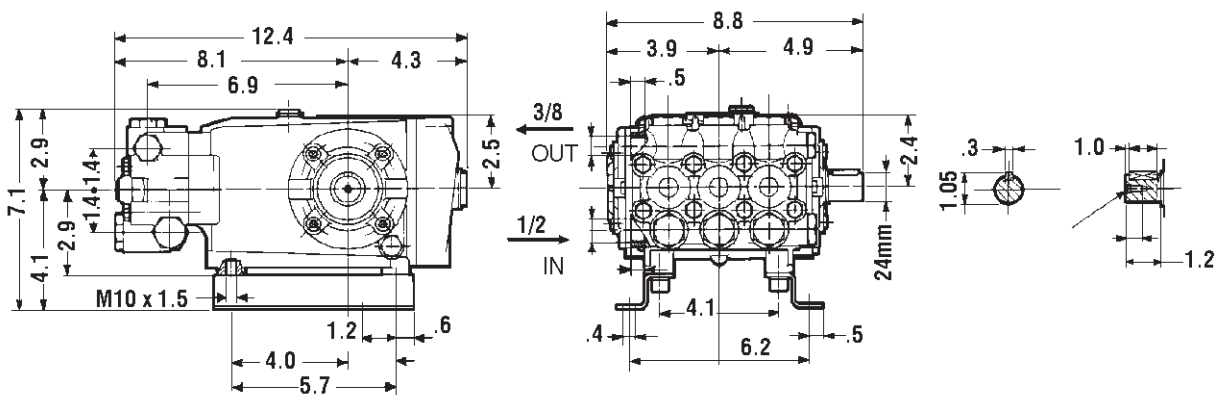
- 316 Stainless steel manifold for maximum corrosion resistance
- The preferred pump frame in the pressure cleaning industry
- Solid ceramic plungers with continuously lubricated packings
- Oversized connecting rods for maximum life
- Heavy duty tapered roller bearings



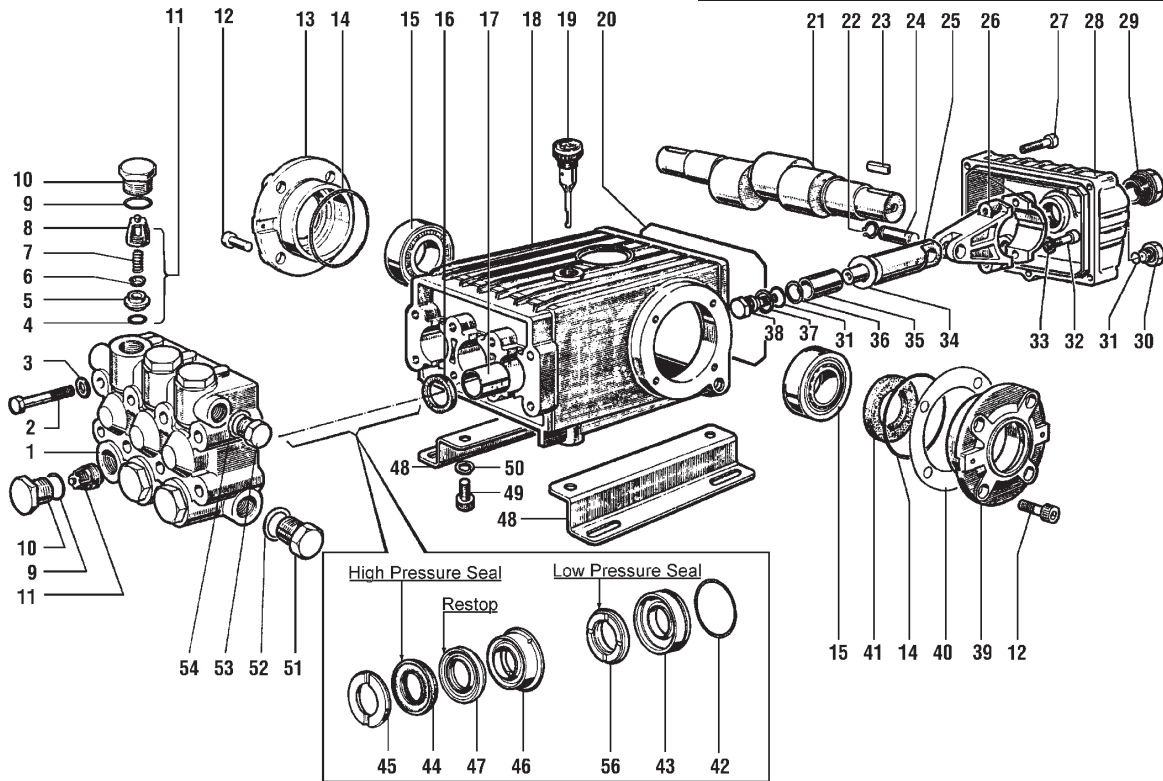
SPECIFICATIONS

Pump Model	TS2012SS	TS2012SS Alternate spec	TS2016SS	TS2212SS	TS2212SS Alternate spec
Maximum Volume	4.0 GPM	4.75 GPM	5.55 GPM	4.75 GPM	5.55 GPM
Maximum Discharge Pressure	2200 PSI				
Horsepower	6.0 BHP	7.2 BHP	8.4 BHP	7.2 BHP	8.4 BHP
Maximum Pump Speed	1450 RPM	1750 RPM	1450 RPM		1750 RPM
Maximum Inlet Pressure	125 PSI				
Maximum Inlet Vacuum	9 ft. water / 7.9 in. Hg				
Bore	.787 in. / 20 mm			.866 in. / 22 mm	
Stroke	.472 in. / 12 mm		.630 in. / 16 mm	.472 in. / 12 mm	
Crankcase Oil Capacity	40.6 oz.				
Maximum Fluid Temperature	165°F				
Inlet Port Thread	1/2-14 Bsp-F				
Discharge Port Thread	3/8-19 Bsp-F				
Shaft Diameter.	.945 in. / 24 mm				
Weight	31 lbs.				
Dimensions	12.25 x 9.2 x 6.9 in.				

DIMENSIONAL DRAWING



47 Series SS – 316 Stainless



PARTS LIST

ITEM	PART NO.	DESCRIPTION	QTY.	ITEM	PART NO.	DESCRIPTION	QTY.	ITEM	PART NO.	DESCRIPTION	QTY.
1.	47121805	Manifold, SS	1	22.	90055700	Circlip	6	39.	47150022	Side cover w/hole	1
2.	99320700	Headbolt, SS M8 x 70	8	23.	91487800	Key	1	40.	97567800	Spacer	2
3.	96702200	Washer, SS, 8.4 x 15 x 1.5	8	24.	97738000	Wrist pin	3	41.	90164800	Shaft oil seal 30 x 55 x 7	1
4.	90384100	O-ring, 17.32 x 2.62	6	25.	47050554	Piston guide	3	42.	90361600	O-ring 34.65 x 1.78	3
5.	36200366	Valve seat	6	26.	47030001	Connecting rod, complete	3	43.	47081266	Seal retainer 20mm	3
6.	36200176	Valve poppet	6	27.	99191200	SHCS, M6 x 30 zinc plated	5	44.	90270500	High pressure seal 20mm	3
7.	94737600	Valve spring	6	28.	47160122	Back cover, deep	1	45.	90272500	High pressure seal 22mm	3
8.	36202551	Valve cage	6	29.	97596800	Oil level sightglass	1	46.	47100051	Head ring 20mm	3
9.	90384700	O-ring 20.24 x 2.62	6	30.	98204100	Plug, 1/4 x 9	1	47.	46100051	Head ring 22mm	3
10.	98223000	Valve cap, SS	6	31.	90358500	O-ring 10.82 x 1.78	4	48.	47217366	Intermediate ring 20mm	3
11.	36711501	Valve assy. complete	6	32.	99309900	SHCS, M8 x 35 zinc plated	6	49.	47217466	Intermediate ring 22mm	3
12.	99303900	SHCS, M8 x 16 zinc plated	8	33.	96701400	Lock washer 8.4 x 13 x 0.8	6	46.	90270400	Restop ring 20mm	3
13.	47150122	Side cover	1	34.	96728600	Flinger washer 14 x 28 x 0.5	3	47.	90273000	Restop ring 22mm	3
14.	90391300	O-ring 67.95 x 2.62	2	35.	47040409	Plunger 20mm	3	48.	47200074	Pump rail	2
15.	91837500	Bearing	2	36.	47040509	Plunger 22mm	3	49.	99364400	SHCS, M10 x 18 zinc plated	4
16.	90162500	Oil seal, plunger rod	3	37.	90506700	Anti-extrusion ring	3	50.	96710600	Washer M10 zinc plated	4
17.	90912600	Guide sleeve	3	38.	96728000	Washer 14 x 18.5 x 0.5	3	51.	98218000	Plug 1/2 x 10 Stainless steel	1
18.	47010022	Crankcase	3	39.	47219566	Plunger bolt	3	52.	96751400	Washer 21.5 x 27 x 1.5 Alum.	1
19.	98210600	Vented dipstick	1	40.	47150022	Side cover w/hole	1	53.	98210066	Plug 3/8 x 13 Stainless steel	1
20.	90392200	O-ring 133.02 x 2.62	1	41.	97567800	Spacer	2	54.	96738000	Washer 17.5 x 23 x 1.5 Alum.	1
21.	47021835	Crankshaft 12mm stroke	1	42.	90164800	Shaft oil seal 30 x 55 x 7	1	55.	90271000	Low pressure seal 20mm	3
	47021735	Crankshaft 16mm stroke	1		90361600	O-ring 34.65 x 1.78	3	56.	90272800	Low pressure seal 22mm	3

REPAIR KITS

KIT NO.	2	3	6	123	7 or 11	69 or 148
					(20mm) (22mm)	(20mm) (22mm)
ITEM NO.s INCLUDED IN KIT	16	41	31, 34, 36, 37, 38	4, 5, 6, 7, 8 (11)	45	44, 47, 56
NUMBER OF ASSEMBLIES IN KIT	3	2	3	6	6	3
NUMBER OF CYLINDERS KIT WILL SERVICE	3	—	3	3	3	3

TORQUE SPECS*

Pos.	Ft.-lbs.	N-M
2	14.7	20
10	73.7	100
12	7.3	10
26	7.3	10
28	14.7	20
35	11.0	15
45	29.4	40
46	29.4	40
83	14.7	20
88	7.3	10

*Decrease torque by 20% if threads are lubricated.

