

FEATURES

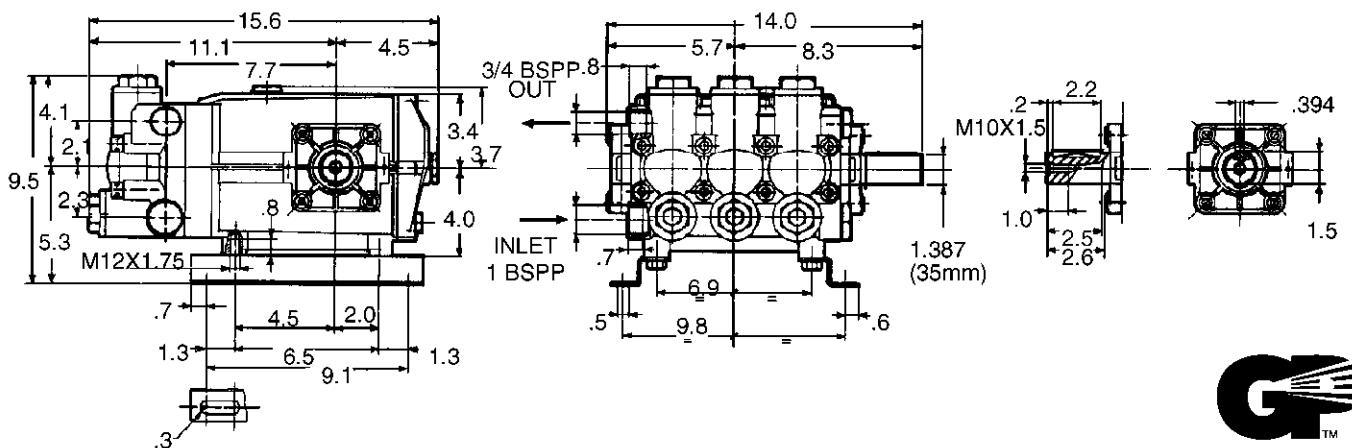
- The industry's choice for high-flow applications
- Forged brass manifold with an exclusive lifetime warranty
- Large-capacity, die-cast, anodized aluminum oil-bath crankcase
- Over-sized connecting rods for maximum life
- Heavy-duty tapered roller bearing.
- Solid ceramic plungers with continuously lubricated packings
- Unitized stainless steel inlet and discharge valves

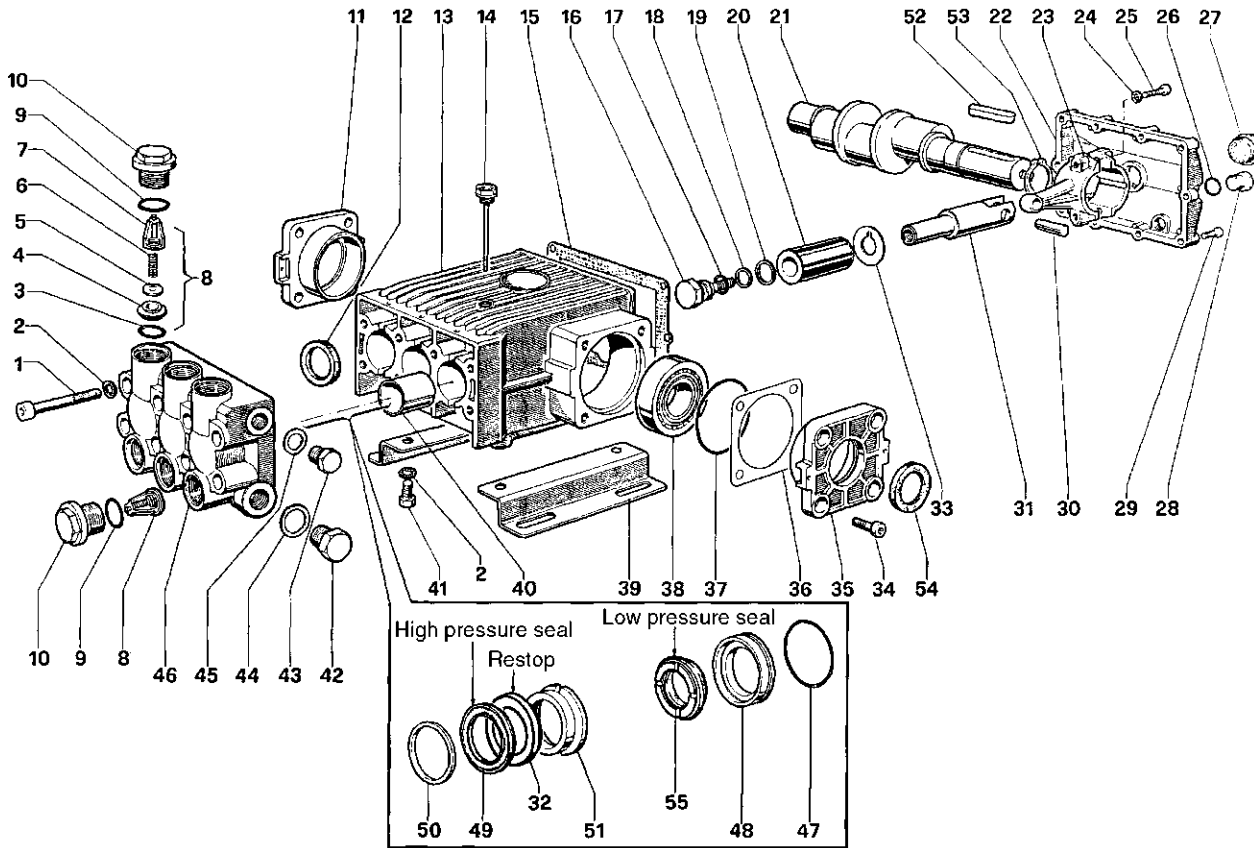


SPECIFICATIONS

Pump Model	T61	T81
Maximum Volume	17.0 GPM	21.0 GPM
Maximum Discharge Pressure	1000 PSI	
Maximum Pump Speed	650 RPM	
Maximum Inlet Pressure	125 PSI	
Maximum Inlet Vacuum	9 ft. water (7.9 in. Hg)	
Bore	1.772 in. / 45 mm	
Stroke (in./mm)	.945 / 24	1.102 / 28
Crankcase Oil Capacity	91 oz.	
Maximum Fluid Temperature	165°F	
Inlet Port Thread	1-11 BSPP-F	
Discharge Port Thread	3/4-14 BSPP-F	
Shaft Diameter.	1.378 in. / 35 mm	
Weight	92 lbs.	
Dimensions	15.6 x 14.0 x 9.5 in.	

DIMENSIONAL DRAWING





PARTS LIST

ITEM PART NO.	DESCRIPTION	KIT NO.	QTY.	ITEM PART NO.	DESCRIPTION	KIT NO.	QTY.	ITEM PART NO.	DESCRIPTION	KIT NO.	QTY.
1	99.4418.00 Screw		8	19	96.7555.00 Washer	74	3	37	90.4141.00 O-Ring		2
2	96.7195.00 Washer		12	20	76.0402.09 Plunger		3	38	91.8474.00 Bearing		2
3	90.4059.00 O-Ring	43	6	21	76.0211.35 Crankshaft (T61)		1	39	76.2000.74 Pump Feet		2
4	36.2011.66 Valve Seat	43	6		76.0210.35 Crankshaft (T81)			40	90.9174.00 Bushing		3
5	36.2010.76 Valve Plate	43	6	22	76.1600.22 Cover		1	41	99.4266.00 Screw		4
6	94.7450.00 Spring	43	6	23	76.0303.01 Connecting Rod		3	42	98.2325.00 Cap		1
7	36.2009.51 Valve Guide	43	6	24	96.7104.00 Washer		6	43	98.2265.00 Cap		1
8	36.7065.01 Valve Assembly	43	6	25	99.3720.00 Screw		6	44	96.7870.00 Washer		1
9	90.4065.00 O-Ring		6	26	90.3833.00 O-Ring		2	45	96.7700.00 Washer		1
10	98.2420.00 Cap		6	27	97.5968.00 Oil Indicator		1	46	76.1200.41 Manifold		1
11	76.1501.22 Cover		1	28	98.2100.00 Cap		2	47	90.3903.00 O-Ring	47, 80	3
12	90.1670.00 Oil Seal	44	3	29	99.1897.00 Screw		10	48	76.0802.70 Packing Retainer	47, 80	3
13	76.0100.22 Crankcase		1	30	97.7400.00 Wrist Pin		3	49	90.2850.00 Packing	79, 80	3
14	98.2270.00 Dip Stick		1	31	77.0500.54 Plunger Guide		3	50	76.1002.93 Head Ring	48, 80	3
15	76.2119.84 Cover Gasket		1	32	90.2848.00 Restop Ring	79, 80, 81	3	51	76.2170.70 Intermed. Ring	80, 81	3
16	69.2195.66 Plunger Screw	74	3	33	96.7568.00 Washer		3	52	91.4978.00 Key		1
17	90.3841.00 O-Ring	74	3	34	99.3652.00 Screw		8	53	90.0695.00 Snap Ring		1
18	90.5107.00 Anti-Ext. Ring	74	3	35	76.1500.22 Cover		1	54	90.1672.00 Oil Seal	32	1
				36	76.2200.78 Shim		2	55	90.2855.00 Seal, Low Press., 45mm	79, 80	3

REPAIR KITS

KIT NO.	32	43	44	47	48	74	79	80	81
ITEM NO.s INCLUDED IN KIT	54	3, 4, 5, 6, 7 (8)	12	47, 48	50	16, 17, 18, 19	32, 49, 55	32, 47, 48, 49, 50, 51, 55	32, 51
NUMBER OF ASSEMBLIES IN KIT	2	6	3	3	6	3	3	1	3
NUMBER OF CYLINDERS KIT WILL SERVICE	-	3	3	3	3	3	3	1	3

TORQUE SPECS*

Position	Ft.-lbs.
1	51.5
10	95.8
16	29.4
25	29.4
27	13.2
28	29.4
29	7.3
34	29.4
41	51.5
42	73.7
43	51.5

*Decrease torque by 20% if threads are lubricated.

