

Models

GP8055, GP8060, GP8065



Contents:

Installation Instructions:	page 2
Pumzp Specifications:	page 3-5
Exploded View/Kits:	page 6
Parts List:	page 7
Dimensions:	back page
Warranty Information	back page

INSTALLATION INSTRUCTIONS

Installation of the Giant Industries, Inc., pump is not a complicated procedure, but there are some basic steps common to all pumps. The following information is to be considered as a general outline for installation. If you have unique requirements, please contact Giant Industries, Inc. or your local distributor for assistance.

1. The pump should be installed flat on a base to a maximum of a 15 degree angle of inclination to ensure optimum lubrication.
2. The inlet to the pump should be sized for the flow rate of the pump with no unnecessary restrictions that can cause cavitation. Teflon tape should be used to seal all joints. If pumps are to be operated at temperatures in excess of 140° F, it is important to insure a positive head to the pump to prevent cavitation.
3. The discharge plumbing from the pump should be properly sized to the flow rate to prevent line pressure loss to the work area. It is essential to provide a safety bypass valve between the pump and the work area to protect the pump from pressure spikes in the event of a blockage or the use of a shut-off gun.
4. Use of a dampener is necessary to minimize pulsation at drive elements, plumbing, connections, and other system areas. The use of a dampener with Giant Industries, Inc. pumps is optional, although recommended by Giant Industries, Inc. to further

reduce system pulsation. Dampeners can also reduce the severity of pressure spikes that occur in systems using a shut-off gun. A dampener must be positioned downstream from the unloader.

5. Crankshaft rotation on Giant Industries, Inc. pumps should be made in the direction designated by the arrows on the pump crankcase. Reverse rotation may be safely achieved by following a few guidelines available upon request from Giant Industries, Inc. Required horsepower for system operation can be obtained from the charts on pages 3 & 6.
6. Before beginning operation of your pumping system, remember: Check that the crankcase and seal areas have been properly lubricated per recommended schedules. Do not run the pump dry for extended periods of time. Cavitation will result in severe damage. Always remember to check that all plumbing valves are open and that pumped media can flow freely to the inlet of the pump.

Finally, remember that high pressure operation in a pump system has many advantages. But, if it is used carelessly and without regard to its potential hazard, it can cause serious injury.

IMPORTANT OPERATING CONDITIONS

Failure to comply with any of these conditions invalidates the warranty

1. Prior to initial operation, add oil to crankcase so that oil level is between the two lines on the oil dipstick. **DO NOT OVERFILL. Use Giant Recommended Oil** Crankcase oil should be changed after the first 50 hours of operation, then at regular intervals of 500 hours or less depending on operating conditions.

2. Pump operation must not exceed rated pressure, volume, or RPM. A pressure relief device must be installed in the discharge of the system.
3. Acids, alkalines, or abrasive fluids cannot be pumped unless approval in writing is obtained before operation from Giant Industries, Inc.
4. Run the pump dry approximately 10 seconds to drain the water before exposure to freezing temperatures.

Specifications

Model GP8055

	U.S.	(Metric)
Volume	Up to 75.5 GPM	(285 LPM)
Discharge Pressure	Up to 3000 PSI	(200 bar)
Speed	Up to 580 RPM	580 RPM
Inlet Pressure	Up to 90 PSI	(6.0 bar)
Plunger Diameter	2.17"	55mm
Plunger Stroke	2.83"	72mm
Crankshaft Diameter	2.76"	70mm
Key Width	0.55"	14mm
Crankshaft Mounting		Either side
Shaft Rotation		Top of pulley towards manifold
Temperature of Pumped Fluids	Up to 140 °F	(60 °C)
Inlet Ports		(2) 3" BSPP
Discharge Ports		(2) 1-1/4" BSPP
Weight	705 lbs./793 lbs.** ..	(320kg/360kg**)
Crankcase Oil Capacity	1.6 Gal.	(3.8 liters)
Fluid End Material		Spheroidal Cast Iron

**weight without/with gear box

Consult the factory for special requirements that must be met if the pump is to operate beyond one or more of the limits specified above.

GP8055 HORSEPOWER REQUIREMENTS

RPM	GPM	500 PSI	1000 PSI	2000 PSI	3000 PSI
300	39	13.9	27.9	55.7	83.6
400	52	18.6	37.1	74.3	111.4
500	65	23.2	46.4	92.9	139.3
580	75.5	27.0	53.9	107.9	161.8

HORSEPOWER RATINGS:

The rating shown are the power requirements for the pump. Gas engine power outputs must be approximately twice the pump power requirements shown above.

We recommend a 1.1 service factor be specified when selecting an electric motor as the power source. To compute specific pump horse power requirements, use the following formula:

$$\frac{\text{GPM} \times \text{PSI}}{1400} = \text{HP}$$

SPECIAL NOTE:

The theoretical gallons per revolution (gal/rev) is 0.130.
To find specific outputs at various RPM, use the formula:

$$\text{GPM} = 0.130 \times \text{RPM}$$

Specifications

Model GP8060

	U.S.	(Metric)
Volume	Up to 90 GPM	(341 LPM)
Discharge Pressure	Up to 2500 PSI	(172 bar)
Speed	Up to 580 RPM	580 RPM
Inlet Pressure	Up to 90 PSI	(6.0 bar)
Plunger Diameter	2.36"	60mm
Plunger Stroke	2.83"	72mm
Crankshaft Diameter	2.76"	70mm
Key Width	0.55"	14mm
Crankshaft Mounting	Either side	
Shaft Rotation	Top of pulley towards manifold	
Temperature of Pumped Fluids	Up to 140 °F	(60 °C)
Inlet Ports	(2) 3" BSPP	
Discharge Ports	(2) 1-1/4" BSPP	
Weight	705 lbs./793**	(320kg/360kg**)
Crankcase Oil Capacity	1.6 Gal.	(3.8 liters)
Fluid End Material	Spheroidal cast iron	

**weight without/with gear box

Consult the factory for special requirements that must be met if the pump is to operate beyond one or more of the limits specified above.

GP8060 HORSEPOWER REQUIREMENTS					
RPM	GPM	500 PSI	1000 PSI	2000 PSI	2500 PSI
300	47	16.8	33.6	67.1	83.9
400	62	22.1	44.3	88.6	110.7
500	78	27.9	55.7	111.4	139.3
580	90	32.1	64.3	128.6	160.7

HORSEPOWER RATINGS:

The rating shown are the power requirements for the pump. Gas engine power outputs must be approximately twice the pump power requirements shown above.

We recommend a 1.1 service factor be specified when selecting an electric motor as the power source. To compute specific pump horse power requirements, use the following formula:

$$\frac{\text{GPM} \times \text{PSI}}{1400} = \text{HP}$$

SPECIAL NOTE:

The theoretical gallons per revolution (gal/rev) is 0.155.
To find specific outputs at various RPM, use the formula:

$$\text{GPM} = 0.155 \times \text{RPM}$$

Specifications

Model GP8065

	U.S.	(Metric)
Volume	Up to 105 GPM	(400 LPM)
Discharge Pressure	Up to 2000 PSI	(140 bar)
Speed	Up to 580 RPM	580 RPM
Inlet Pressure	Up to 90 PSI	(6.0 bar)
Plunger Diameter	2.36"	60mm
Plunger Stroke	2.83"	72mm
Crankshaft Diameter	2.76"	70mm
Key Width	0.55"	14mm
Crankshaft Mounting	Either side	
Shaft Rotation	Top of pulley towards manifold	
Temperature of Pumped Fluids	Up to 140 °F	(60 °C)
Inlet Ports	(2) 3" BSPP	
Discharge Ports	(2) 1-1/4" BSPP	
Weight	705 lbs./793**	(320kg/360kg**)
Crankcase Oil Capacity	1.6 Gal.	(3.8 liters)
Fluid End Material	Spheroidal Cast Iron	

**weight without/with gear box

Consult the factory for special requirements that must be met if the pump is to operate beyond one or more of the limits specified above.

GP8065 HORSEPOWER REQUIREMENTS					
RPM	GPM	500 PSI	750 PSI	1000 PSI	2000 PSI
300	54	19.3	28.9	38.6	77.1
400	72	25.7	38.6	51.4	102.9
500	91	32.5	48.8	65.0	130.0
580	105	37.5	56.3	75.0	150.0

HORSEPOWER RATINGS:

The rating shown are the power requirements for the pump. Gas engine power outputs must be approximately twice the pump power requirements shown above.

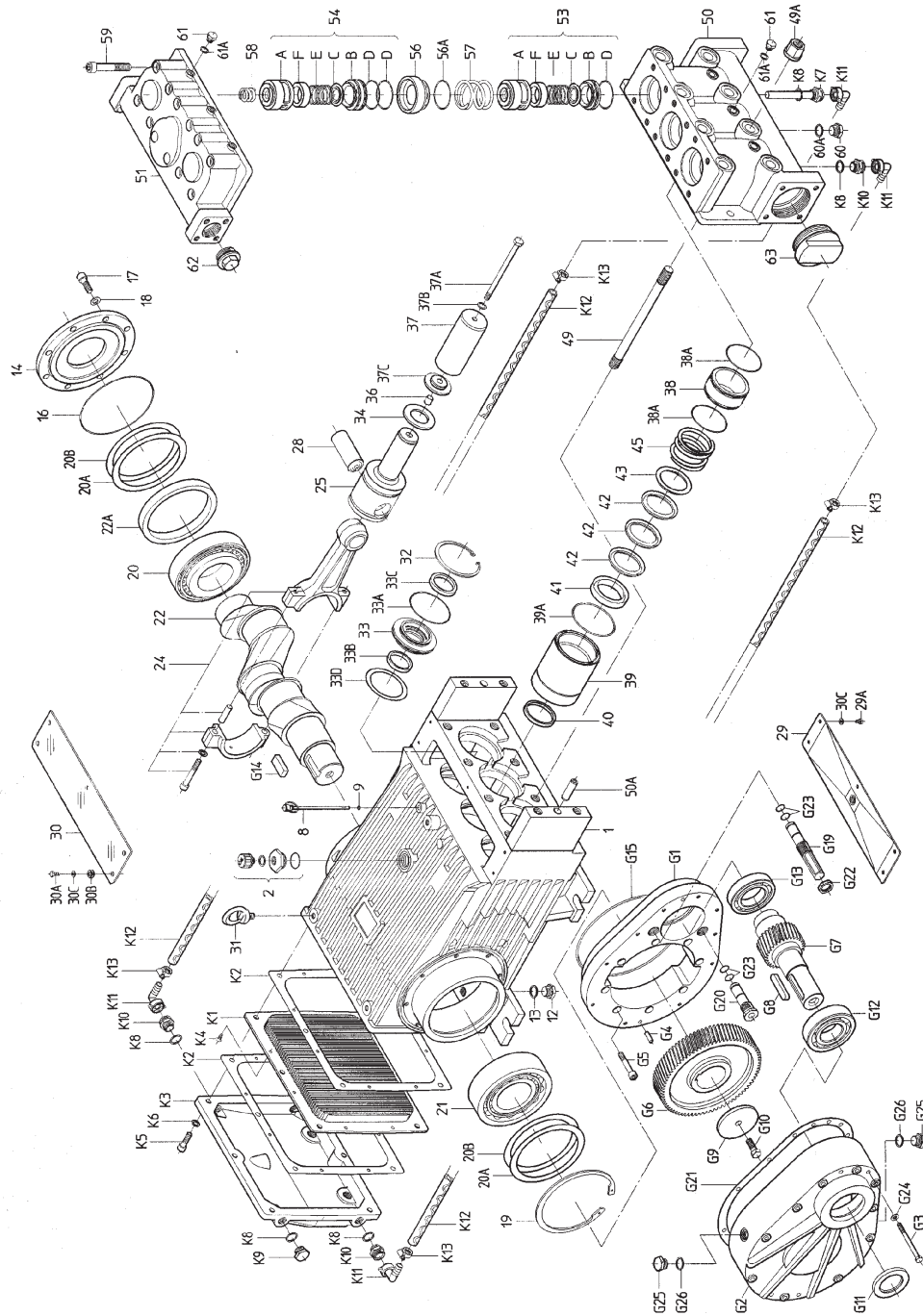
We recommend a 1.1 service factor be specified when selecting an electric motor as the power source. To compute specific pump horse power requirements, use the following formula:

$$\frac{\text{GPM} \times \text{PSI}}{1400} = \text{HP}$$

SPECIAL NOTE:
 The theoretical gallons per revolution (gal/rev) is 0.181.
 To find specific outputs at various RPM, use the formula:

GPM = 0.181 x RPM

Exploded View - GP8050, GP8060, GP8065



Seal Repair Kit

09586 - GP8065

Item	Part #	Description	Qty.
38A	06667	O-Ring	6
39A	05066	O-Ring	3
40	05067	Seal Ring	3
42	05069	Sleeve	9

Oil Seal Kit

09221 - GP8000 Series

Item	Part #	Description	Qty.
33A	05056	O-Ring	3
33B	05057	Compact Ring	3
33C	05058	Radial Shaft Seal	3

Inlet Valve Repair Kit

09587 - GP8055, GP8060, GP8065

Item	Part #	Description	Qty.
53B	05078	Inlet Valve Seat	1
53C	05079	Valve Plate	1
53D	07658	O-Ring	1
53E	05080	Valve Spring	1
53F	05081	Valve Spring Guide	1

Discharge Valve Repair Kit

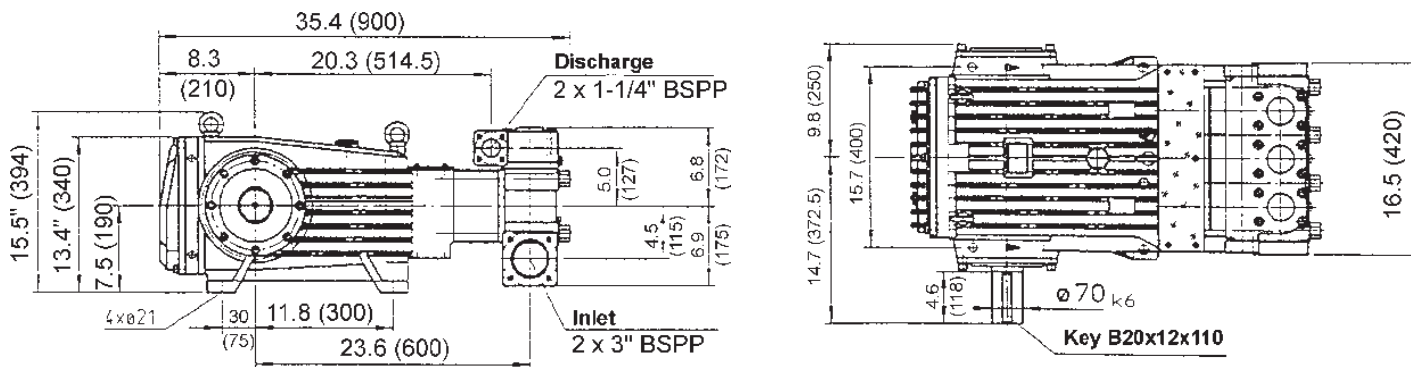
09588 - GP8055, GP8060, GP8065

Item	Part #	Description	Qty.
54B	05084	Discharge Valve Seat	1
54C	05079	Valve Plate	1
54D	06258	O-Ring	1
54E	05080	Valve Spring	1
54F	05081	Valve Spring Guide	1

PARTS LIST - GP8050, GP8060, GP8065

<u>ITEM</u>	<u>PART</u>	<u>DESCRIPTION</u>	<u>QTY.</u>	<u>ITEM</u>	<u>PART</u>	<u>DESCRIPTION</u>	<u>QTY.</u>
1	05024	Crankcase For Right Gear	1	43	05070	Sleeve Support Ring	3
2	06912	Oil Filler Plug Assy With Vent	1	45	05071	Seal Tension Spring	3
3	05025	Oil Cooler	1	49	05072	Stud Bolt	8
K1	05026	Cooling Vane Plate	1	49A	05073	Hexagon Nut	8
K2	05027	Seal For Gear Cover	2	50	05074	Valve Casing	1
K3	05028	Gear Cover	1	50A	13162	Centring Stud	2
K4	05029	Hexagon Head Countersunk Screw	8	51	05075	Discharge Casing	1
K5	07381	Hexagon Socket Screw	6	53	05076	Suction Valve Assy.	3
K6	08041	Washer	6	53A	05077	Spring Tension Cap	1
K7	05030	Connection For Oil Cooler	1	53B	05078	Suction Valve Seat	1
K8	07661	Copper Seal Ring	6	53C	05079	Valve Plate	1
K9	07109	Plug	2	53D	07658	ORing	1
K10	05031	Reducing Nippel Brass	3	53E	05080	Valve Spring	1
K11	05032	Hose Adaptor	4	53F	05081	Valve Spring Guide	1
K12	05033	Tube For Cooler	2	54	05082	Discharge Valve Assy.	3
K13	05034	Hose Clamp	4	54A	05083	Spring Tension Cap	1
8	05035	Oil Dipstick Assy.	1	54B	05084	Discharge Valve Seat	1
9	06225	O Ring	1	54C	05079	Valve Plate	1
12	07109	Plug	2	54D	06258	ORing	2
13	07182	Seal	2	54E	05080	Valve Spring	1
14	05036	Bearing Cover Closed	1	54F	05081	Valve Spring Guide	1
16	05037	ORing	1	56	05085	Discharge Valve Adaptor	3
17	05038	Hexagon Socket Screw	8	56A	06258	ORing	3
18	05039	Spring Ring	8	57	05086	Pressure Spring	3
19	05040	Clip Ring	1	58	06078	Compression Spring	3
20	05041	Tapered Roller Bearing	1	59	05087	Hexagon Socket Screw	12
20A	05042	Shim	5	60	07109	Plug	1
20B	05043	Fitting Disc	5	60A	07661	Copper Seal Ring	1
21	05044	Tapered Roller Bearing	1	61	06090	Plug	6
22	05045	Crankshaft For Gear	1	61A	06934	Copper Gasket	6
22A	05046	Spacer Ring	1	62	06909	Plug	1
24	05047	Conrod Assy.	3	63	05088	Plug	1
25	05048	Crosshead C/W Plunger	3	64	05089	Protective Plug	1
28	05049	Crosshead Pin	3	65	05090	Stop Plug	1
29	05050	Splash Cover	1	66	07662	Mounting Aid Valve	1
29A	05057	Hexagon Screw	5	2	05091	Gear	1
30	05052	Cover Plate	1	G1	05092	Base Plate Gear	1
30A	07225-0100	Hexagon Screw	5	G2	05093	Cover For Gearbox	1
30B	13136	Grommet	5	G3	05094	Hexagon Screw	10
30C	05053	Washer	10	G4	05095	Cylindrical Pin	2
31	07623	Eye Bolt	3	G5	05096	Hexagon Socket Screw	8
32	05054	Clip Ring	3	G6	05097	Cogwheel	1
33	05055	Seal Retainer	3	G7	05098	Pinion Shaft For Gear	1
33A	05056	ORing	3	G8	07614	Fitting Key	1
33B	05057	Compact Ring	3	G9	05099	Fixing Disc	1
33C	05058	Radial Shaft Seal	3	G10	05100	Hexagon Screw	1
33D	05059	Fitting Disc	6	G11	05101	Shaft Seal Ring	1
34	05060	Oil Shield P80	3	G12	05102	Ball Bearing	1
36	06900	Centring Sleeve	3	G13	05103	Ball Bearing Gear	1
37	05061	Plunger Pipe	3	G14	05104	Fitting Key	1
37A	05062	Tension Screw	3	G15	05105	ORing	1
37B	07665	Copper Washer	3	G19	05106	Oil Exchange Nippel	1
37C	05063	Cover For Plunger Pipe	3	G20	05107	Connection Nippel	1
38	05064	Seal Case	3	G21	05108	Gear Seal	1
38A	06667	ORing	6	G22	05109	Sleeve Nut	1
39	05065	Seal Sleeve	3	G23	08335	ORing	4
39A	05066	ORing	3	G24	05110	Washer	10
40	05067	Seal Ring	3	G25	07109	Plug	2
41	05068	Pressure Ring	3	G26	07182	Seal	2
42	05069	Sleeve	9				

GP8050, GP8060, GP8065 SERIES DIMENSIONS - INCHES (mm)



GIANT INDUSTRIES LIMITED WARRANTY

Giant Industries, Inc. pumps and accessories are warranted by the manufacturer to be free from defects in workmanship and material as follows:

1. For portable pressure washers and self-service car wash applications, the discharge manifolds will never fail, period. If they ever fail, we will replace them free of charge. Our other pump parts, used in portable pressure washers and in car wash applications, are warranted for five years from the date of shipment for all pumps used in NON-SALINE, clean water applications.
2. One (1) year from the date of shipment for all other Giant industrial and consumer pumps.
3. Six (6) months from the date of shipment for all rebuilt pumps.
4. Ninety (90) days from the date of shipment for all Giant accessories.

This warranty is limited to repair or replacement of pumps and accessories of which the manufacturer's evaluation shows were defective at the time of shipment by the manufacturer. The following items are NOT covered or will void the warranty:

1. Defects caused by negligence or fault of the buyer or third party.
2. Normal wear and tear to standard wear parts.
3. Use of repair parts other than those manufactured or authorized by Giant.
4. Improper use of the product as a component part.
5. Changes or modifications made by the customer or third party.
6. The operation of pumps and or accessories exceeding the specifications set forth in the Operations Manuals provided by Giant Industries, Inc.

Liability under this warranty is on all non-wear parts and limited to the replacement or repair of those products returned freight prepaid to Giant Industries which are deemed to be defective due to workmanship or failure of material. A Returned Goods Authorization (R.G.A.) number and completed warranty evaluation form is required prior to the return to Giant Industries of all products under warranty consideration. Call (419)-531-4600 or fax (419)-531-6836 to obtain an R.G.A. number.

Repair or replacement of defective products as provided is the sole and exclusive remedy provided hereunder and the MANUFACTURER SHALL NOT BE LIABLE FOR FURTHER LOSS, DAMAGES, OR EXPENSES, INCLUDING INCIDENTAL AND CONSEQUENTIAL DAMAGES DIRECTLY OR INDIRECTLY ARISING FROM THE SALE OR USE OF THIS PRODUCT.

THE LIMITED WARRANTY SET FORTH HEREIN IS IN LIEU OF ALL OTHER WARRANTIES OR REPRESENTATION, EXPRESS OR IMPLIED, INCLUDING WITHOUT LIMITATION ANY WARRANTIES OR MERCHANTABILITY OR FITNESS FOR A PARTICULAR PURPOSE AND ALL SUCH WARRANTIES ARE HEREBY DISCLAIMED AND EXCLUDED BY THE MANUFACTURER.